

John Deere Skid Steer Winch Mount Bumper



Armor Cage is excited to introduce a super heavy duty winch mount bumper for John Deere Skid Steer models 333G, 331G, and 325G.

This beastly bumper is made of 1/2" and 5/8" steel plate, so it can take a beating on the job and add 300 pounds of counterweight at the same time.

Three bolts on both sides attach the side connecting plates securely to your skid steer and our design leaves room to the JD access panels without needing to remove the bumper.

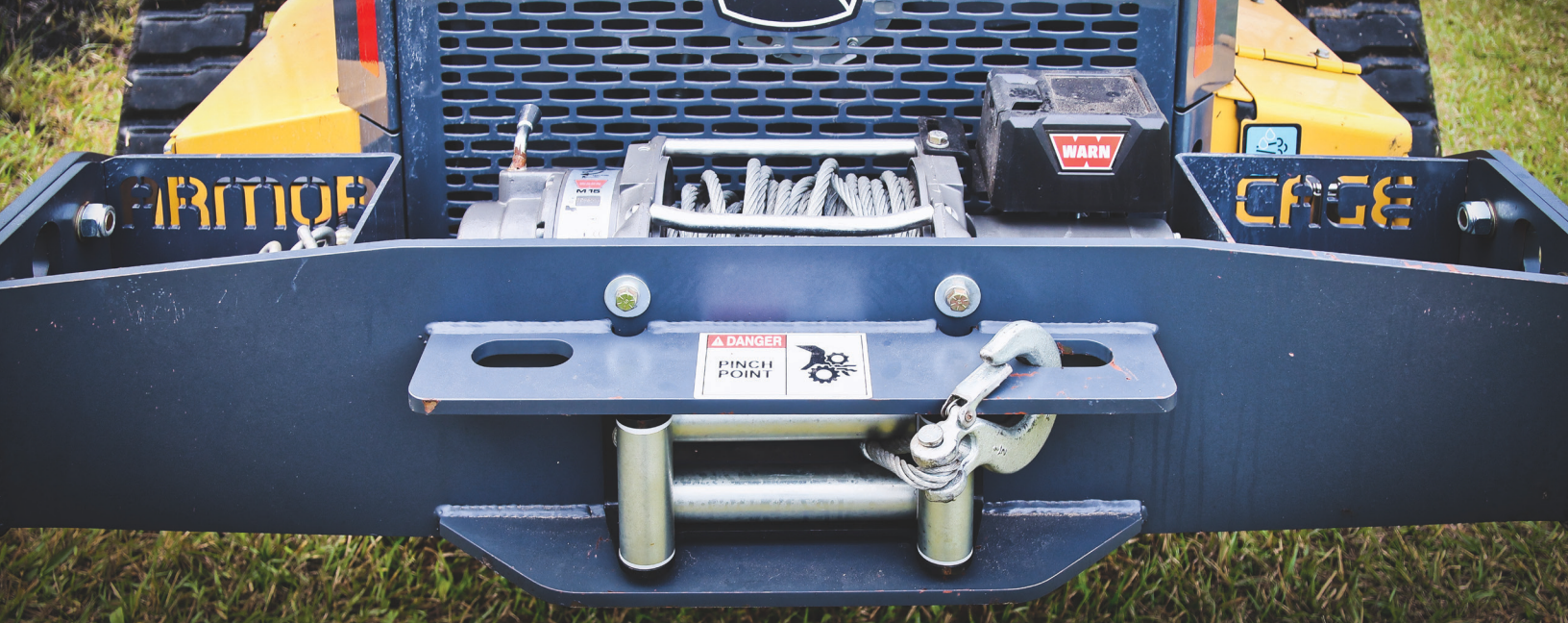
Convenient chain holders with chain binding slots on both sides, along with two clevis points above the roller fairlead mounting area, make hooking up that much faster so you can get moving again.

The JD skid steer winch mount bumper is compatible with the following winch models:

- WARN M15 (47801)
 - WARN M15-S (97730)
 - WARN 16.5 TI (68801)
 - WARN 16.5 TI-S (97740)
 - WARN G2 15 DC (104525)*
 - WARN G2 15 DC (104520)*
 - All WARN G2 Series with 8" or 10" Drums*
 - WARN 15-S (91053)*
 - Smittybilt XRC 15500 LB Winch (97415)*
 - Smittybilt XRC 17500 LB Winch (97417)*
- *Will require roller fairlead WARN (69394) or similar*

Other winch models may be used (provided overall width does not exceed 29") and may require some additional drilling.





YOUR ARMOR CAGE DEALER:



866.835.9766